

**TOSHIBA**

Stream knowledge.  
Transform expectations.



**We are Toshiba.** We commit to raising the quality of life for people around the world, ensuring progress that is in harmony with our planet. We have an unwavering drive to make and do things that lead to a better world.



### **Committed to People, Committed to the Future.**

Toshiba Tec is a globally operating business, with headquarters in Japan and over 80 subsidiaries worldwide. We are active in various high-tech industrial sectors - ranging from retail, education and business services to hospitality and manufacturing.

Toshiba has a long history of innovation, developing numerous pioneering electric and electronic products that represented firsts of their kind since 1875.

We are a leading supplier of information technology, helping organisations become more profitable, efficient and eco-friendly by transforming the way information is captured, managed, displayed and shared. As part of a trusted and widely respected global network, we offer unrivalled expertise and an innovative range of technology, ensuring this technology is fully integrated and seamlessly streamlined by offering a range of workplace solutions.



### **Our Commitment to the World.**

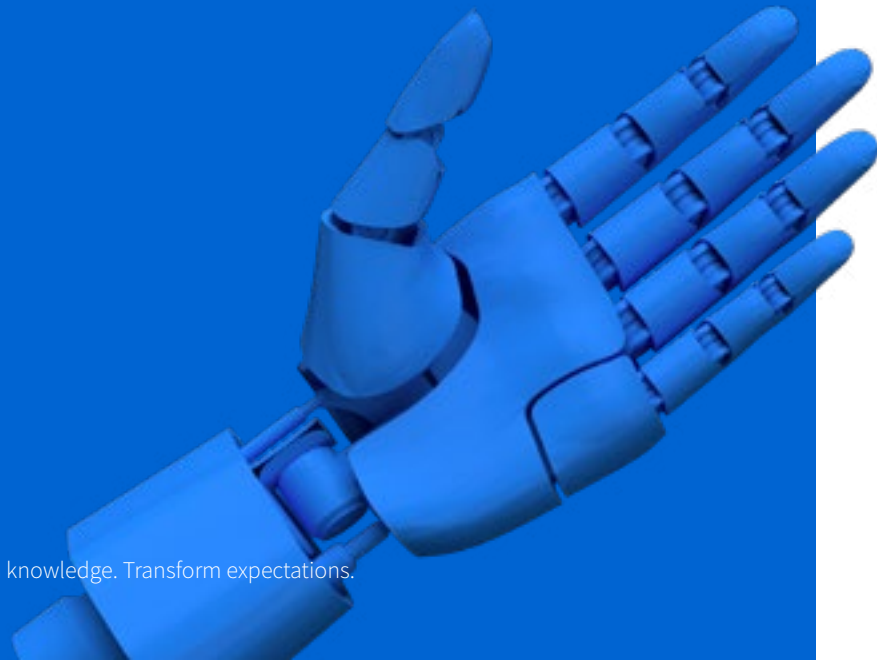
We seek to contribute toward the development of a global society as a good corporate citizen, law-abiding and ethical, by fulfilling our responsibilities toward each country and community in which we operate and respecting local culture and history.

Caring for the environment and its resources is part of Toshiba's tradition. Aiming to become one of the world's foremost eco companies, we continue to ask how mankind should live in the future and what role we should play in society and for the Earth. The Toshiba Group has developed the **Environmental Vision 2050**.

This vision includes the goal to reduce 50% of Greenhouse Gas (GHG) emissions by 2030, contributing to the realisation of a net zero emissions society. These goals will also include further focus on creating a circular economy, promoting efficient use of resources in products, services and business activities. All Toshiba production facilities are certified to the international standard ISO14001.

# Create a work environment to **unlock business potential**

The pandemic has given us 25 years of digital transformation in 15 months. Business life has shifted in ways few could have imagined. Competitor sets, operating environments, even customers may have changed.

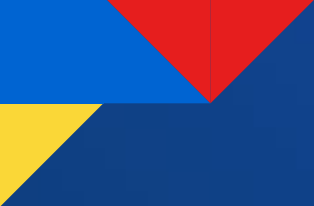


## **The Challenges**

Such a rapid period of change inevitably brings with it challenges. Workarounds devised to help suppliers and customers may not be robust enough for the long term. Technology issues or inequalities emerging before the pandemic may now be magnified. And, with the last two years' data representing an anomaly, it's harder than ever to make assumptions about the future with the same degree of confidence.

## **The Opportunity**

One thing's for sure; the new digital first economy is here to stay. It presents so much opportunity that even those previously resistant to change have embraced new possibilities.



# Knowledge on Demand

In the old world of work, getting the right documents to the right people in the right format used to be the end of the story. Now, we need and expect to be able to access business knowledge whenever and wherever, effortlessly and seamlessly.

Use our Knowledge on Demand expertise to digitally upgrade how your business cares for, stores and distributes its knowledge. Give your teams the tools and processes they need to collaborate, innovate and add value.

## Use Knowledge on Demand Solutions to:

- Make the best use of everyone's resources
- Make it easier for people to create and collaborate wherever they are
- Find faster, more joined-up ways of moving knowledge around your business
- Automate time-consuming, error-prone manual processes
- Reduce mistakes and downtime by promoting more efficient ways of working
- Move knowledge around your business in a secure yet accessible way
- Find more sustainable ways to care for, store and distribute your knowledge



### Managed Print Services

An eco-system of services, hardware, and software, specifically designed to streamline print activities and optimise the overall print environment. This enables your business to reduce total printing costs, improve workflow and lower overheads by not only providing ongoing management, but also through monitoring and machine service and support, onsite and remotely.

### Barcode Printing Solutions

We combine a diversity of barcode printers, from portable through to heavy-duty industrial devices, alongside innovative technologies, and user-friendly label software. Designed with the functionality and reliability to keep your workplace and products moving, barcoding solutions help a wide range of industries operate more productively, efficiently, and with a low cost of ownership.

### Process Optimisation

Through the digitisation and automation of everyday document workflow activities, you can enhance operational effectiveness and save your business time, resources, and money. What's more, by automating workflows with recognition technology and metadata, organisational processes are enhanced, and the retrieval of documents becomes secure, structured, and cost-effective.



## Domains of Expertise

To meet the different needs of the various companies across many industries, we offer a large array of workplace solutions. Each is capable of seamlessly integrating into your existing IT environment and easy to administrate.

# Flexible Printing Solutions

Improve productivity, operations and accuracy across your organisation. Toshiba's printing solutions adapt to your working environment and will help you drive measurable improvements

Easy to install and administrate, take full advantage of your print fleet's potential and optimise the usage of each system, be it a single-function printer, multifunction printer (MFP), barcode printer or print/device management tools.

Toshiba's print solutions enable you to significantly reduce your printing waste and associated costs. Keep track of the status of all systems in your network, reduce downtime and enjoy significant savings in both time and money.

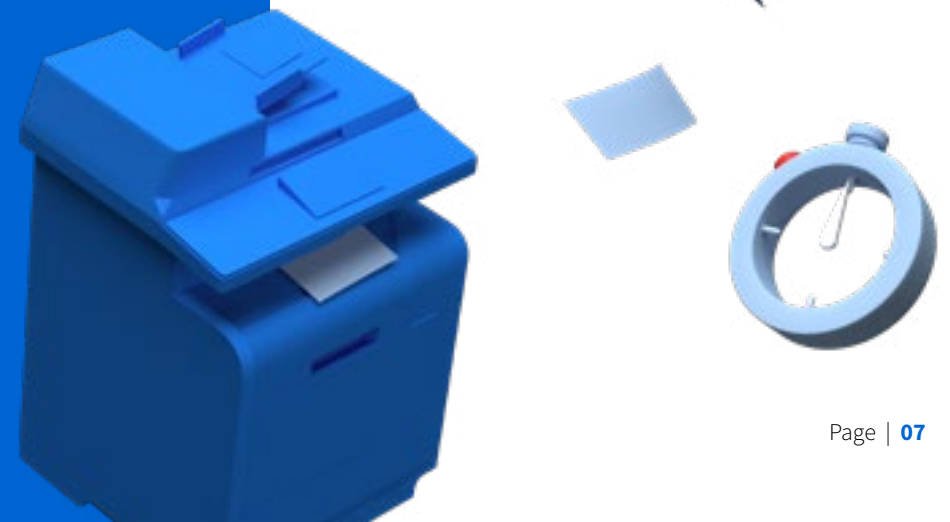


## MFPs and Printers

We offer a wide choice of print solutions from small desktop devices through to high volume multifunction devices, designed to fit seamlessly into business environments, and customised to simplify your document workflows.

## Barcode and Label Printers

From entry level to high performance, Toshiba barcode/label printers are easy to use, enhance productivity and improve efficiency. And with long lasting print heads, they are low maintenance with a low total cost of operation. Each one is designed for scalability and flexibility, so you can find the right fit for any of your business needs.



# Streamlining Document Workflow

Remote working isn't new, but hybrid working patterns might mean you are required to be more flexible to support a distributed workplace, ensuring your organisation can work effectively. At Toshiba we can help you map out a cloud and physical printing environment that works for everyone. We'll help you automate manual processes, streamline document workflows and keep your data secure.

Let us put leading technology to work for you. Capturing, digitising, storing, managing and printing more efficiently than before.



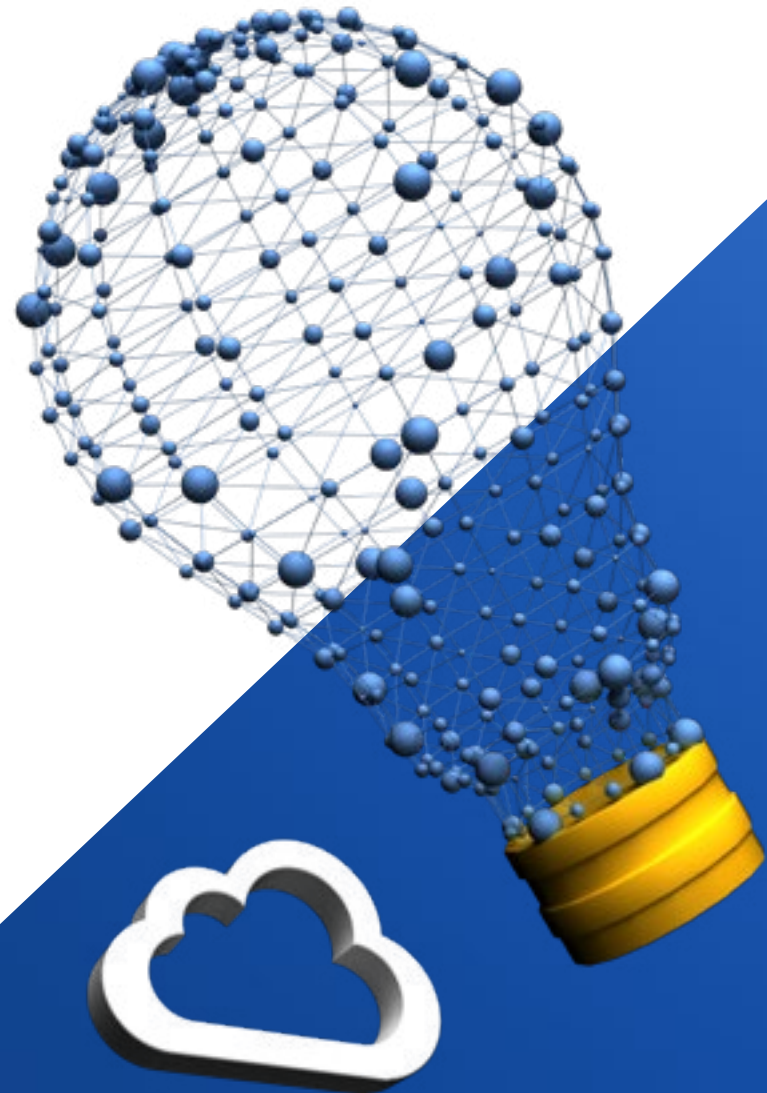


# Supporting your commitment to sustainability

We put concern for the environment as a priority in all our business activities so as to protect people's safety and health as well as the world's natural resources. Through our product design thinking and Knowledge on Demand expertise we hope to help you find ways of moving towards a **circular economy**. Energy efficient products and services that optimise the entire product use life cycle, reducing waste of all kinds.

Find out more about this topic, visit:

[www.toshibatec.co.uk](http://www.toshibatec.co.uk)



# Upgrade to Knowledge on Demand

We'll work with you at all levels of your business to understand how we can help you find better ways to create, share, store and distribute your knowledge. Challenge us to improve your connectivity and take the friction and cost out of some of your most challenging or error-prone daily operations.

To find out more about our Knowledge on Demand expertise visit: [www.toshibatec.co.uk](http://www.toshibatec.co.uk)



**TOSHIBA**